



NEWINGTON
LONDON

2 Bedrooms

Apartment

Located in London

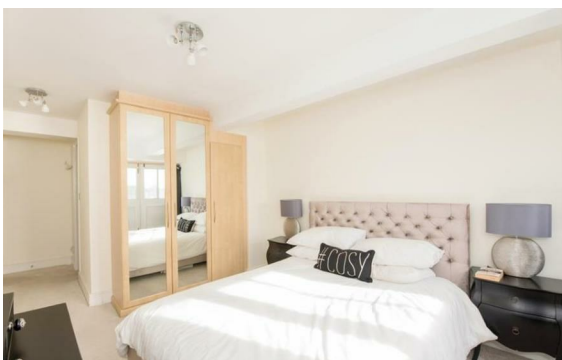
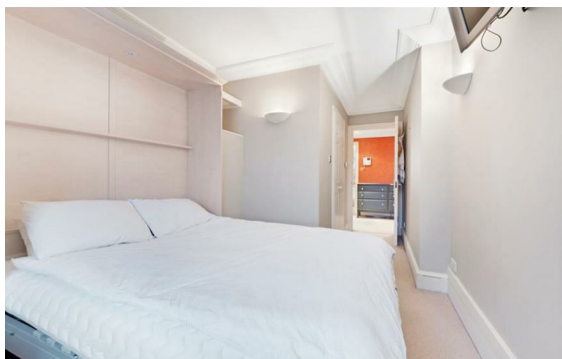
£670 Per Month



info@newingtonstates.com

<http://www.newingtonstates.com>

020 7724 2233



A beautifully presented two-bedroom apartment located on the 2nd floor in a purpose built portered block moments from the amenities of St John's Wood. Comprising of two lovely bedrooms, one family bathroom, spacious reception room with cozy design and fully fitted kitchen with ample storage. Property further benefits from the carpet flooring throughout, lift access and portorage in the block.

The property is located moments from the amenities of St. John's Wood High Street and St. John's Wood Underground (Jubilee Line).

EPC rating: C

Energy Efficiency Rating: C

Agents Note: Whilst every care has been taken to prepare these particulars, they are for guidance purposes only. All measurements are approximate and are for general guidance purposes only and whilst every care has been taken to ensure their accuracy, they should not be relied upon and potential buyers/tenants are advised to recheck the measurements.

NEWINGTON LONDON

60 Upper Montagu Street

London

W1H 1SN

020 7724 2233

info@newingtonstates.com

<http://www.newingtonstates.com>